

Year 2 Newsletter

Summer 2
2026

Raleigh Infant and
Admirals Academies

Welcome

Dear families,

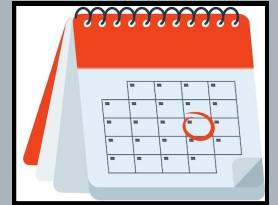
Welcome back! We hope you have had a lovely, relaxing half term and enjoyed the hot weather. We have an exciting and very busy last term so are very excited to welcome the children back for their final term of year 2.

We cannot wait to celebrate the children's success and achievements at the end of the year with you!

From the Year 2 team.



Important Dates



- 12/6/26—Day of Welcome parent event
- WC. 22/6/26—Year 2 SATS week
- 23/6/26—KSI & KS2 Sports Day
- 01/07/26—Academy Fete (2pm)
- 07/07/26—Explore Science trip
- 08/07/26—Transition morning
- 09/07/26—Transition day
- 16/07/26—Year 2 'moving on' assembly and party
- 17/07/26—End of term

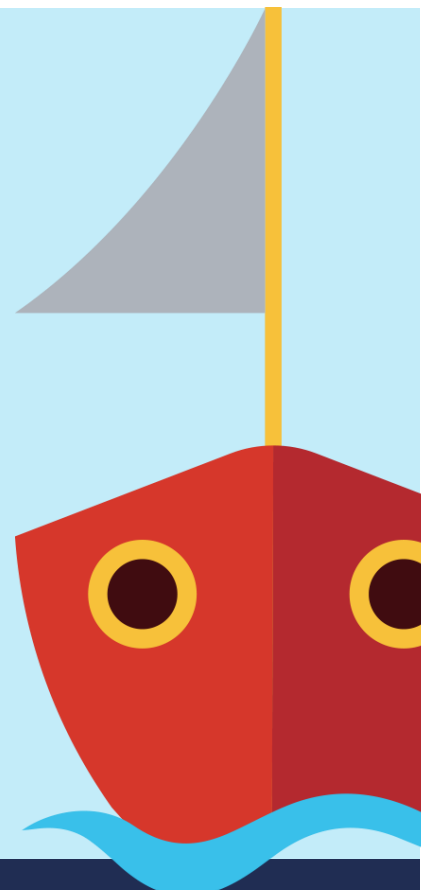
PKC

Geography:

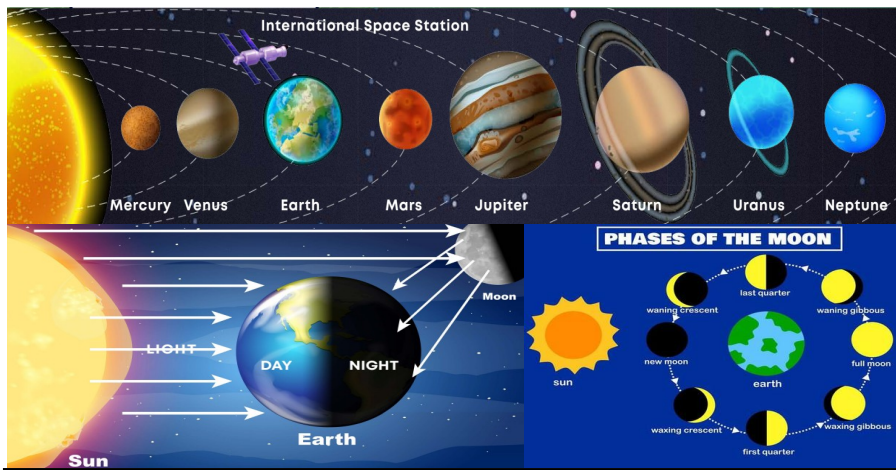
The children will continue their learning about Northern Europe. They will begin to develop an understanding of migration and why animals move around the world. They will also explore the concept of adaptation and how people and animals adapt to survive cold climates.

Art:

The children will be introduced to murals and tapestries. The unit involves studying a range of famous examples of frescoes and comparing tapestry work created throughout different centuries. The children will work together to create a large underwater sea scene by using mono-printing techniques and weaving.



More information can be found online at www.raleighinfant.co.uk



Science

The children will be learning about the planets of our solar system and will begin to understand orbit and rotation. Throughout this unit, they will study the phases of the moon, recognising that although our view of the moon changes, the moon itself does not change shape. They will explore the stars and constellations, and the different formations they make in the sky, such as the Great Bear. The children will also learn about space exploration focusing on a range of missions, and will understand the importance of the International Space Station.

Key Information

Spellings: Weekly, it is better to practice all week to embed in the long term memory.

Maths: Practise 2, 5, 10 and 3 times table to develop automaticity.

Reading: Please note in your child's reading record. Include any book that you are reading with your children. Library sessions are on **Monday's**.



Home Learning:

- Weekly homework is set every **Thursday** and is due back into class on the following **Tuesday**.

PE:

- Day: Monday
- Please ensure your child wears their PE kit (white t-shirt, black jumper, black shorts or jogging bottoms).

PSHE: We will be focusing on; life cycles in nature, growing from young to old, increasing independence, differences in female and male bodies, assertiveness and preparing for transition.

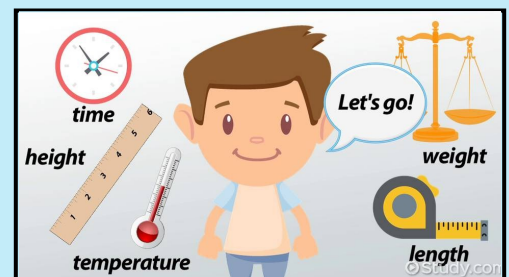
English



In reading, our class text will be 'Fantastic Mr Fox'. The story follows Mr Fox and his animal friends, who live near three cruel farmers. The story is about triumphing the importance of family and friends as well as the power of intelligence in overcoming strength.

In writing, we will be producing a recount from a personal experience, using first person and past tense. We will also produce a non-chronological report focusing on different sentence types, subordinating conjunctions, technical vocabulary and a range of

Maths



Children will be learning about a range of measurements such as length, height, mass, capacity and temperature. Children will learn to estimate and accurately measure in centimetres and metres. We will then focus on position and direction. Our final topic will be continuing our multiplication and division unit for the 2, 5 and 10 times tables.



EMAT
EASTERN MULTI-ACADEMY TRUST