

Year 6 Newsletter

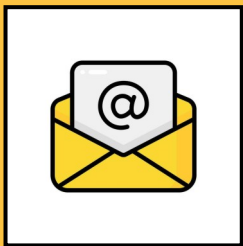
Summer 1
2026

Raleigh Infant and
Admirals Academies

Welcome

Dear families of our Year 6 children.

We hope you have been able to enjoy some time with your children and families over the Easter holidays. At school, we begin the Summer term, this newsletter will summarise what your children will be learning in the weeks leading up to the half-term holiday.



If you have any questions regarding your child at school, please contact the office or your child's teacher.

From the Year 6 team

Important Dates



4/5/26—Bank Holiday Monday

WC. 11/5/26—SATS week

15/5/26—Garden Centre visit

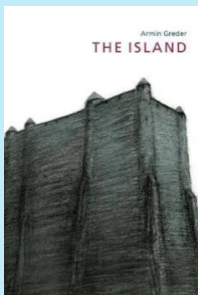
21/5/26—Class photos

22/5/26—Last day of term

English

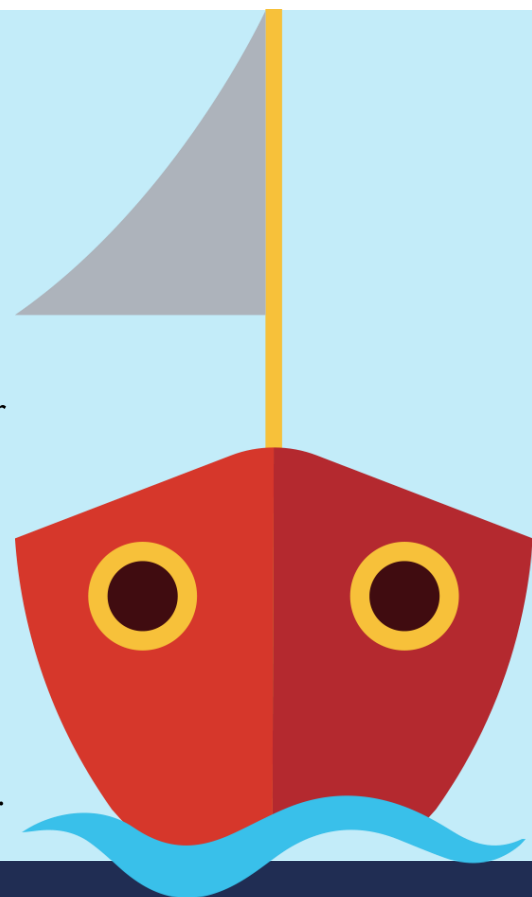
Writing:

In our writing lessons, Year 6 children will be focusing on practising and revising key spelling and grammar that children are expected to understand and use for their year group. For example, children will practise identifying and using different clauses and commas. During wider curriculum lessons, children will be given the opportunity to use what they have learned in their writing lessons, to improve the quality and cohesiveness/flow of their writing.

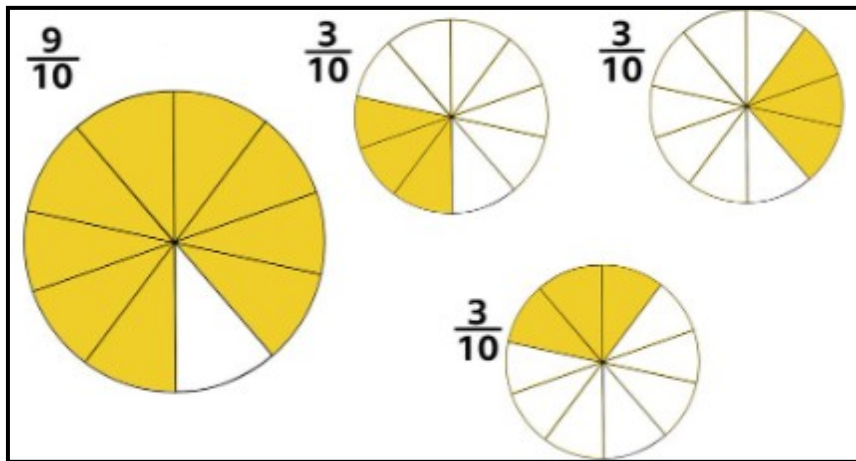


Reading:

In our reading lessons, Year 6 children will be reading two main books - 'The Island' and 'Dare to be Me'. We will be practising the key reading skills, for example ordering different statements about a text, inferring information about a character's actions and drawing evidence to back up a point.



More information can be found online at www.raleighinfant.co.uk



Mathematics

$$\frac{9}{10} \div 3$$

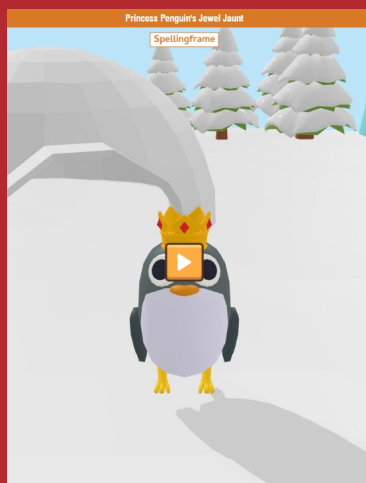
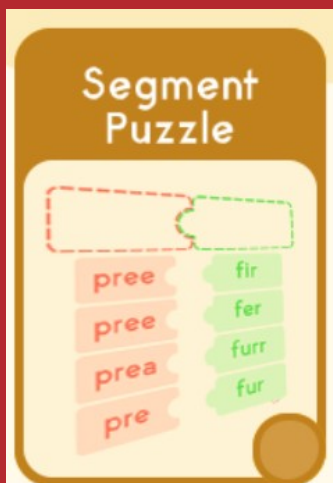
This term, children will be practising and refining their mathematical skills and applying them to a range of reasoning questions.

For example, we will be revising how to calculate using fractions. If your child is struggling, please ensure they practise at home, using resources such as their Maths Revision Guide, any useful videos and step-by-step guidance websites. Many help pages can be found on BBC Bitesize for maths, and other subjects as well.

Homework:

Spelling Frame

Part of your child's weekly homework is to use the website Spelling Frame. Their login information is glued into their green homework books. Your child's teacher has set your child word groups to practise and there are games and activities for your child to complete each week. Please ask if your child can't find their username or password.



Geography



In Geography, Year 6 children will be learning about Africa.

Topics they will be exploring, include:

- The Continent of Africa
- Past civilisations and empires – Mansa Musa
- The Sahara Desert and Desertification
- Food Security
- Kenya

Life Skills



In PSHE this term, we will be focusing on Mental health, including:

- Identifying mental health worries and support for mental health
- Love and loss
- Managing feelings
- Power and control
- Assertiveness
- Technology safety
- Taking responsibility with technology



EMAT
EASTERN MULTI-ACADEMY TRUST