

Year 4 Newsletter

Spring 2
2025

Raleigh Infant and
Admirals Academies

Welcome

Dear families,

We hope you all had a wonderful half-term break and are feeling refreshed and ready for the exciting weeks ahead! As we embark on this new half-term, we are pleased to share some of the engaging topics we will be exploring with the children. Thank you for your continued support.

From the Year 4 team.



Important Dates



Friday 14th March - Science morning.

Tuesday 18th March - Trip to Lackford Lakes.

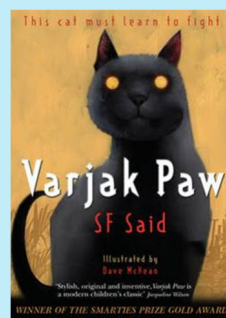
Monday 31st March - Theatre Production: The Railway Children.

Friday 4th April - Last day of term.

English

Reading

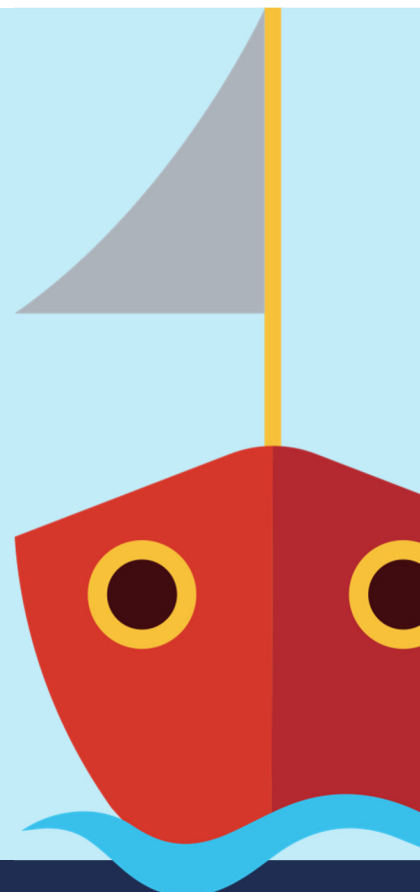
Our class text this half term is *Varjak Paw* by SF Said. It is about a pedigree cat called Varjak and his family. Varjak has always been the outcast of the family, however, he risks venturing out of the house where they live to try and save them from an unfamiliar gentleman and his two cats. Will he be able to survive in the outside world?



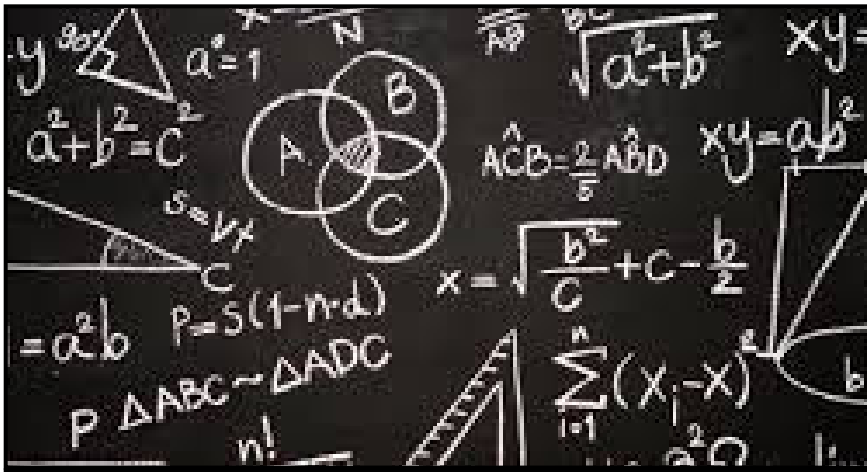
Writing

This half term, we will be writing explanatory texts on the digestive system. In this unit, we will be learning how to sustain the present tense, use technical vocabulary in context and to organise our writing in paragraphs.

We will also be writing third-person adventure stories where we will be embedding the use of simple past tense, third-person perspective and how to use inverted commas accurately in direct speech.



More information can be found online at www.raleighinfant.co.uk



Mathematics

We will begin this half-term by focusing on co-ordinates, learning to plot points on the first quadrant of a co-ordinate grid and translating shapes from one position to another within the grid. Following on from this, our focus will turn to a review of fractions before moving onto fractions that are greater than one. Here we will learn how to add and subtract fractions, as well as convert between mixed numbers and improper fractions.

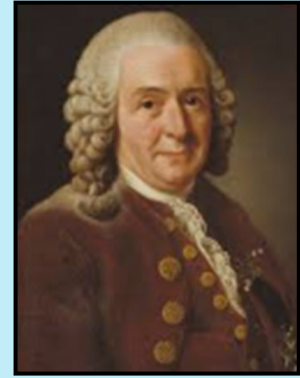
Homework

Times Tables

With the Year 4 multiplication tables check fast approaching your child's confidence with their times tables is essential. To support them with this their Times Table Rockstars login is available on the inside of their homework book; allowing them to practice as much as possible at home.



Science



This half-term in science, we will be learning about the classification of plants and animals. We will begin by learning about the work of Carl Linnaeus and what classification is. Using this knowledge, we will learn about and identify animals that are vertebrates (fish, amphibians, birds, reptiles and mammals) and invertebrates (insects, arachnids and molluscs). Finally, we will look at how plants are classified into two groups, flowering and non-flowering.

PSHE



In PSHE this term, we will be focusing on: healthier friendships, group dynamics, smoking (including vaping), alcohol, assertiveness, peer-pressure and celebrating inner strength.



EMAT
EASTERN MULTI-ACADEMY TRUST