

Reception Newsletter

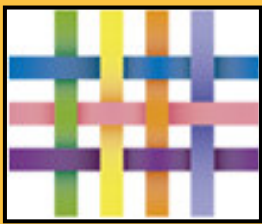
Spring 2
2025

Raleigh Infant and
Admirals Academies

Welcome

We hope you had a refreshing half term break. We hope you are looking forward to the second Spring term, with lots of fun learning in store!

Make sure to regularly check **Tapestry** to see the latest updates about learning within Reception, as well as how you can support your child at home. Home learning is set every **Friday**, for us to share in class the following **Thursday**. Please also



upload any other learning that takes place outside of school - we value all learning!

The Reception Team

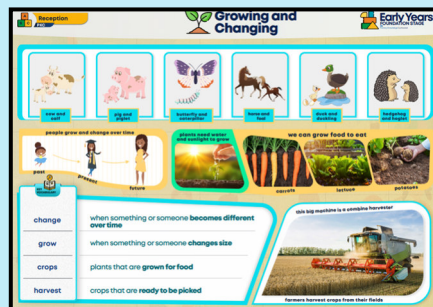
Important Dates



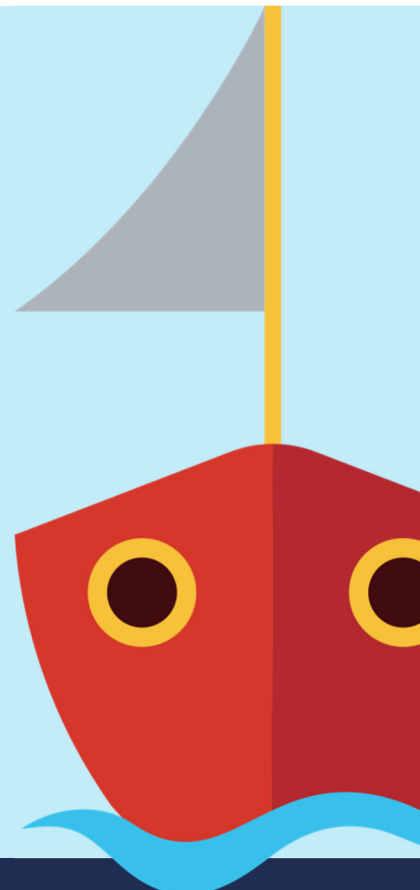
- 10th March - RSHE meeting for parents
- 11th March - South Angle Farm Trip
- 31st March - Theatre Production: The Railway Children.
- 4th April — Last day of term

Wider Curriculum

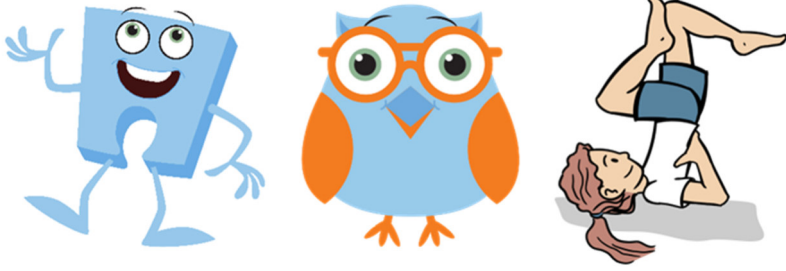
Our learning theme in **PKC** for this half term is **Growing and Changing**. We will enjoy exploring this in a variety of ways, including looking at the seasons and weather, growing plants and crops, discovering how animals grow and change, and recalling how we grow and change. We look forward to taking a trip to **South Angle Farm** to immerse ourselves in the learning even further.



As part of our Growing and Changing exploration, we will be becoming botanists and farmers, revamping our outside growing space and creating a **mini-allotment** for the children to use as part of their learning. We would appreciate any kind donations to help us develop this - such as **compost, plant pots, seeds and bulbs!** Top gardening tips are always welcome too!



More information can be found online at www.raleighinfant.co.uk



Other Subjects

PE is every **Friday**. Your child needs to come to school in their PE kit. This half-term we will be focusing on developing a range of skills within **gymnastics**.

In **RE**, we will be exploring Easter, including signs of Spring, and the traditions of the celebration for Christians.

In **PSHE**, we will explore how to be healthy, including exercising our bodies, healthy food, sleep, keeping clean, and staying safe.

Our Key Focus

Phonics



This half-term we will be continuing to embed our knowledge of **Phase 2** and **Phase 3 Phonics**. We will be reviewing all taught graphemes and tricky words, as well as practising the skills of oral blending, word reading, and spelling. We will continue to grow our skills by reading increasingly longer words, including compound words and plural words.

How can you help at home?

- Read as much as possible!
- Regularly practise identifying all Phase 2 and Phase 3 graphemes. This can be made fun by going on 'grapheme hunts', hiding graphemes in your environment, or even spotting them on walks!
- Identify and read all taught tricky words.
- Practise blending sounds together to read words.
- Encourage your child to segment words using their phonics to spell.
- Scan the code for a link to the **Little Wandle** Parents Area.



Literacy



In **Literacy**, we use '**Drawing Club**' to develop the children's fine motor skills, creative thinking, alongside their writing.

Our key texts this half term will be '**Handa's Surprise**' by Eileen Browne, '**Farmer Duck**' by Martin Waddell, and '**Jack and the Beanstalk**' by Mara Alperin.

When practising writing at home, please encourage your child to use their growing phonics knowledge to spell. In Reception, words do not need to be spelt correctly, just 'phonetically plausible'.

Mathematics



In **Maths** this half term, we will continue to build upon the skills we developed previously. Our key mathematical learning themes will include: developing our **subitising** skills, **counting**, **matching** and **ordering** numerals, exploring the **composition** of numbers, and **comparing** amounts. We will also be exploring **patterns** further.



EMAT
EASTERN MULTI-ACADEMY TRUST