

Reception Newsletter



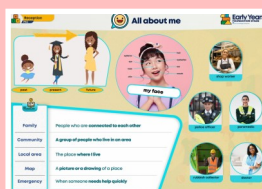
Autumn 1



Dear Families,

Welcome to Reception! We hope you had a great Summer holiday and are looking forward to the first Autumn term. We have a busy term ahead, packed with lots of fun learning!

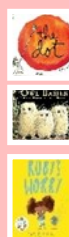
Our learning theme for this half term is '**All about me**'. We will be enjoying getting to know ourselves and each other better, and building our knowledge of our bodies, families, local community and our school.



Our work in **Maths** this half-term will give us a foundation of knowledge to be built upon throughout the academic year. We will be exploring a range of number-based mathematical concepts including subitising, counting, cardinality, composition and comparison, alongside wider mathematical concepts such as matching and sorting, patterns and time.

We will be beginning to learn Phase 2 **Phonics** this half term, using the Little Wandle Phonics scheme. We will learn Phase 2 graphemes and tricky words, alongside learning how to blend sounds together to read words.

For **Literacy**, we will be using '**Drawing Club**' to help develop children's fine motor skills, creative thinking, alongside their writing. Children will explore a range of stories and use their increasing Phonics knowledge to support and build confidence in their writing. Our key texts will be '**The Dot**' by Peter Reynolds, '**Owl Babies**' by Martin Waddell, and '**Ruby's Worry**' by Tom Percival.



We will begin EYFS Baseline Assessments this half term. More information about this can be found here: <https://www.gov.uk/government/publications/reception-baseline-assessment-information-for-parents>

You should receive a Tapestry log-in soon via email. Please make sure you regularly check Tapestry to see the latest learning updates within Reception and how you can support your child at home.

The Reception Team

Important Dates

18 Sep - Reception dress up day (theme: what do you want to be when you grow up?)

2 & 3 Oct - Parents Evening

3 Oct - Photo day

Home Learning

Weekly homework is set every **Friday** via **Tapestry** and is due back by the following **Thursday**.



Weekly homework includes:

- **Reading** - please note your child's reading within their **reading records**.
- An activity related to our current learning.

Home Reading Challenge

For every **25 reads** noted in children's reading records, children will receive a **book mark reward!** Please note **all** reading—including reading for pleasure, as well as reading for phonics!



PE

This half term we will be focusing on the foundations of physical education, including safety and control. PE will be on a **Friday** and your child needs to come to school in their PE kit.



Please visit our website for more information. <https://www.raleighinfant.co.uk/>