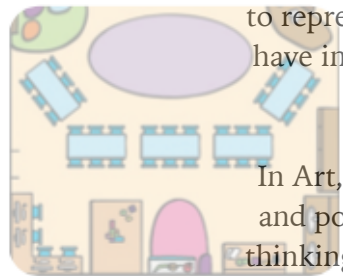


# WHAT IS LIFE LIKE AT RALEIGH?

## Week 1 Values

This week we will begin our topic by looking at what it means to be a member of our school; what values we have and why these are important.

We will also be creating self portraits, ready to display on our class gallery alongside our New Year Resolutions - our hopes and targets for 2021.



## Week 2

### Classroom maps

After learning about aerial perspective (or birds-eye view) we will be creating maps of the classroom. We will select appropriate symbols to represent the different objects and areas we have in the classroom and then use our maps to take part in treasure hunts.

In Art, we will be studying famous paintings and portraits of children from years gone by, thinking about what we can learn from a piece of art.

## Week 3

### The School Environment

In Geography this week, we will be venturing out into the school environment and taking part in a senses walk to see what we can find out about our school. What buildings are there? What areas are there? Does any wildlife live here?

We will be using our findings and observations from our work to start work on maps of the school.

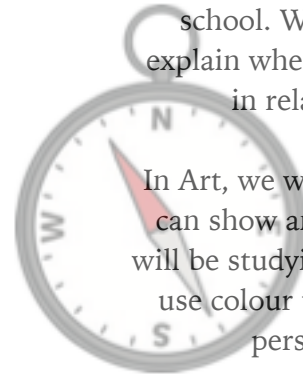


## Week 4

### Compass points

After completing our maps, we will then learn about and use the 4 compass points North, East, South and West to create directions to use around the school. We will also use these to explain where buildings and areas are in relation to each other.

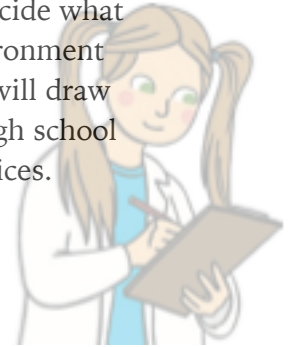
In Art, we will be learning how colour can show and express emotions. We will be studying famous portraits which use colour to tell us more about the person in the picture.



## Week 5

### What could be better?

In Geography, we will use our map skills, our observational fieldwork and our discussions to decide what areas of the school environment could be improved. We will draw maps of our ideal Raleigh school and explain our choices.



## Week 6

### Express Raleigh Travel Agents

This week, we will be using all of our learning to become travel agents and persuade people to visit our school.

We will also be using all of our learning in Art to create self portraits in our own style, using colour, tone and lines to make it unique.



# WHAT IS LIFE LIKE AT RALEIGH?

## WHAT IS THE TOPIC ALL ABOUT?

In this Geography topic, we will be learning about how maps can be useful. We will learn about aerial view and how to create an effective key. We will learn to listen to and give directions, using locational language and the 4 points on a compass. We will also take part in fieldwork and use our observations to suggest improvements for the school environment.

In Art, we will be studying self portraits, starting by looking at famous paintings of children and understanding what we can find out about them from one picture. We will learn how colour, tone and line can be used for effect and then apply these skills to create a self portrait which reflects each of us.



## WHAT CAN I DO AT HOME?

These activities are for you to try at home. You can try all of them or choose the ones you find the most interesting.

- Create a map of a room in your house. Design a key to help people understand it.
- Direct a family member around the house using the 4 compass points.
- Design a treasure map and create clues to help someone find your hidden treasure.
- Research the self portraits of famous artists and create your self portrait in their style.  
(Try Vincent Van Gogh or Salvador Dali)
- Try creating a mixed up portrait with someone at home. Ask each person to draw themselves, then cut up the features as we did in school. Then mix up the different features and mix them together to create a Picasso-style abstract portrait!

### Key Vocabulary

map  
aerial  
view  
key  
direction  
behind  
far from  
under  
next to  
near to  
north  
south  
east  
west

